

UNDERSTANDING PSORIASIS CARE COSTS AND THE IMPACT OF COMORBIDITIES: A TIME-DRIVEN ACTIVITY-BASED COSTING ANALYSIS

Introduction

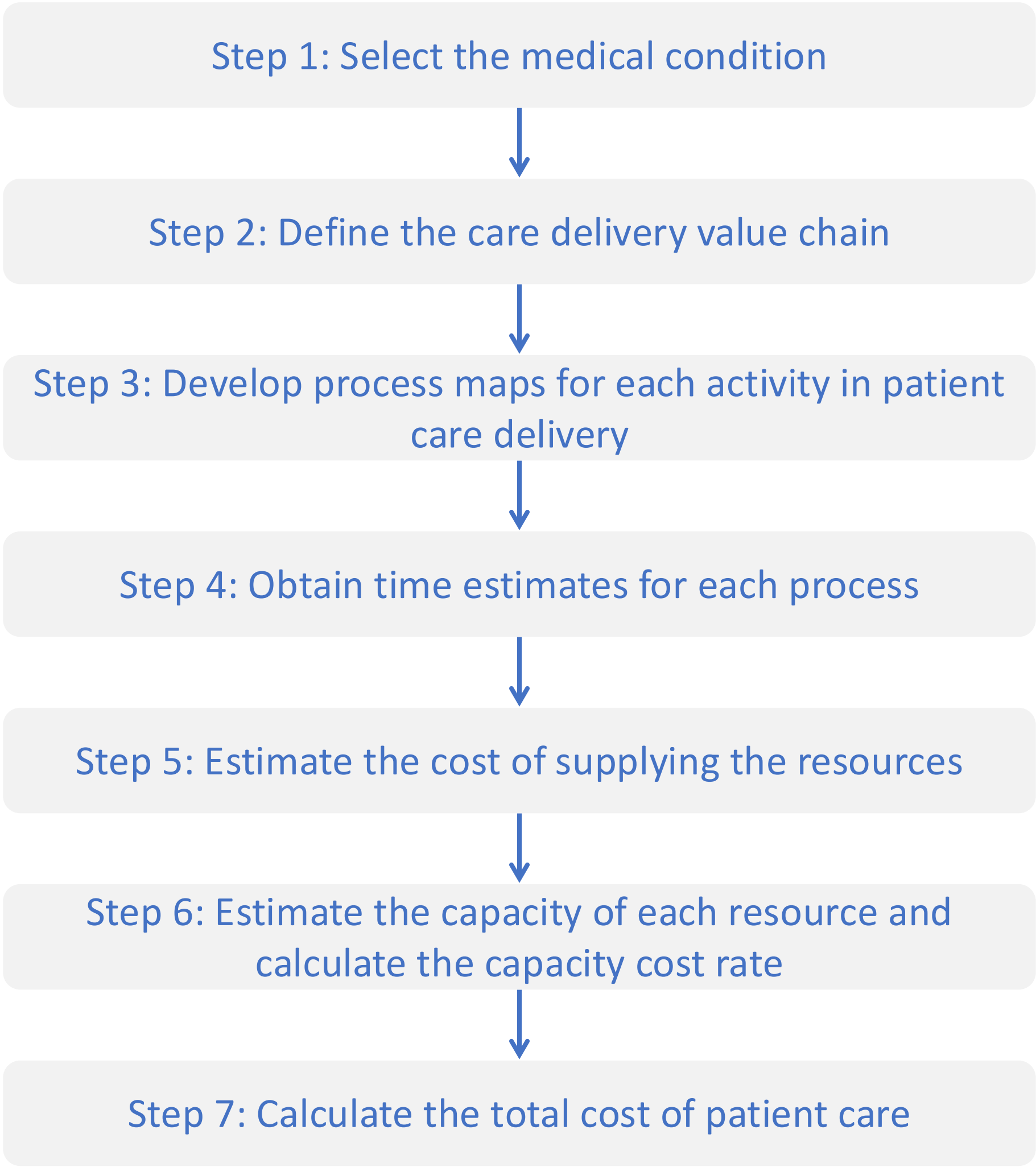
Psoriasis is a chronic skin disease frequently associated with costly comorbidities. This study uses Time-Driven Activity-Based Costing (TD-ABC) to:

- 1
- Accurately calculate the cost of treating psoriasis and comorbidities
- 2
- Identify cost drivers linked to patient, disease, and treatment characteristics
- 3
- Assess the mismatch between real care costs and Belgium’s Fee-For-Service (FFS) reimbursement

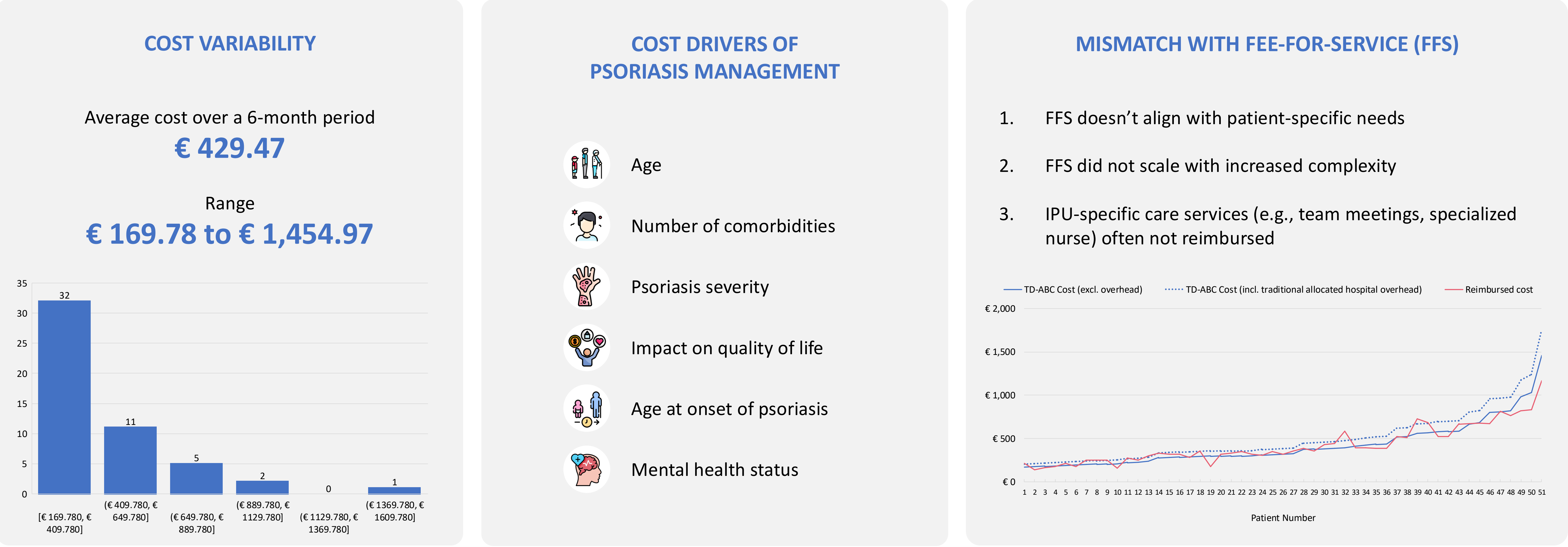
Methods

Setting	Integrated Practice Unit (IPU) “PsoPlus” at Ghent University Hospital
Design	7-step TD-ABC methodology
Sample	52 patients (January–November 2023) participating in the IRIS Trial
Data	Interviews, time tracking, clinical observations, medical records, and hospital cost data

7-step TD-ABC methodology



Results



Conclusions

- 1
- TD-ABC provides a more accurate picture of care costs.
- 2
- Current FFS reimbursement fails to reflect care complexity.
- 3
- Holistic care (IPUs) needs tailored reimbursement strategies.

Contact

joke.borzee@vlerick.com
emma.vyvey@ugent.be

Universiteit Gent

@ugent

Ghent University