

A multidisciplinary patient-centred minimal set of work-related outcomes

~An add-on to existing ICHOM sets~

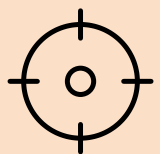
Marije Hagendijk¹, Nina Zipfel¹, Jan Hoving¹, Marijke Melles², Philip van der Wees³ & Sylvia van der Burg-Vermeulen¹

1. Department of Public and Occupational Health, University of Amsterdam, Amsterdam UMC.

2. Faculty of Industrial Design Engineering, Delft University of Technology.

3. Scientific Institute for Quality of Healthcare, Radboud University Nijmegen Medical Centre.

PURPOSE



Develop an:

- add-on minimal set of the most important work-related outcomes
- and associated case-mix factors

to be collected in work-focused healthcare.



For patients experiencing work participation problems due to cardiovascular diseases.

MODIFIED DELPHI METHOD



Long list of all work-related outcomes

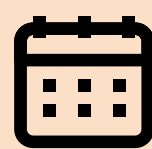
Guidelines Literature → 33 outcome domains



Expert group

6x patients & 11x professionals

Insurance physician, occupational physician, labour expert, (corporate) physiotherapist, specialised nurse, reintegration coach, general practitioner, psychologist, cardiologist

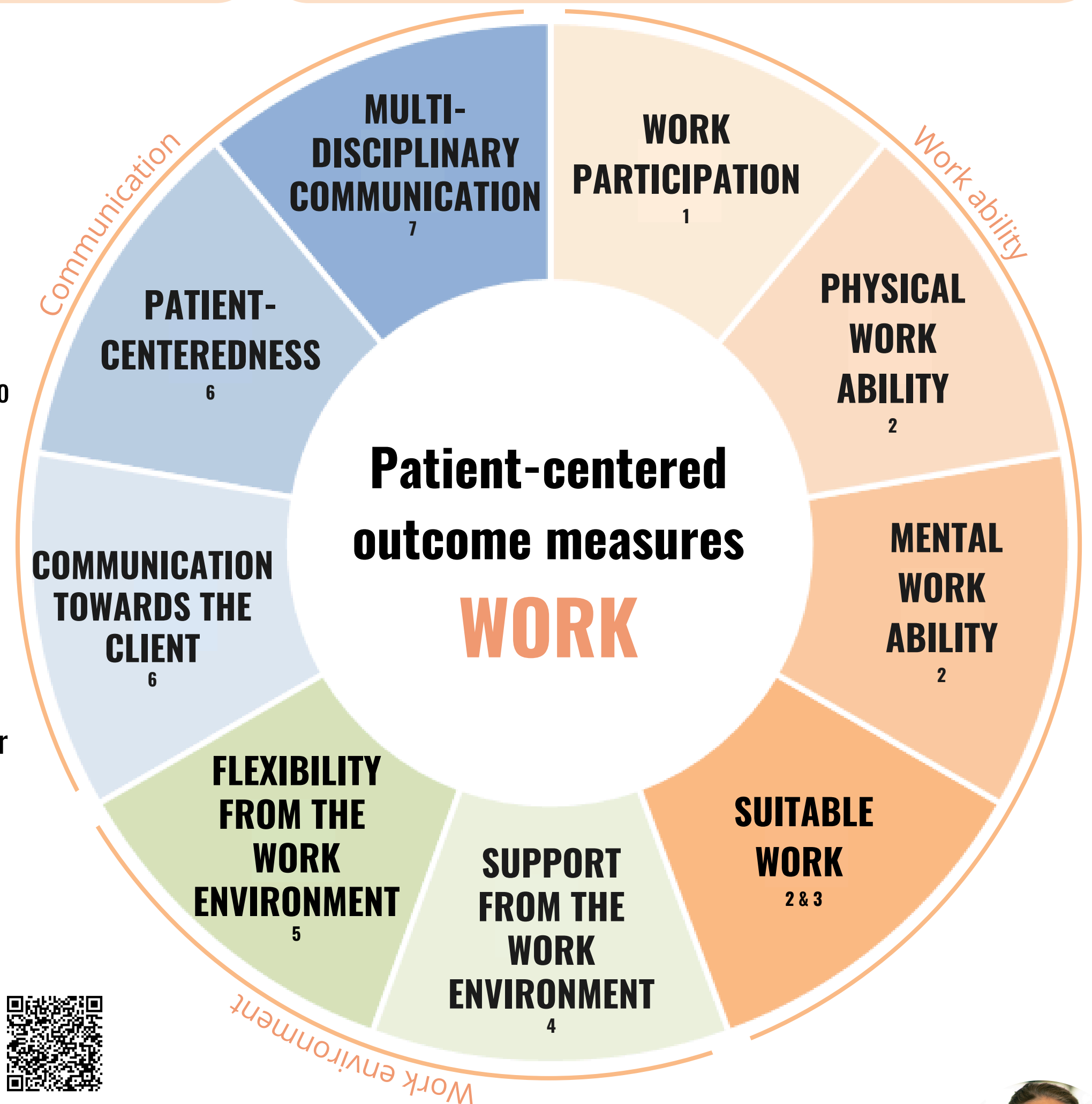


Timeline

4x expert group meeting followed by a voting round
February 2023-August 2023

Outcome measures:

1. Includes current employment status, work participation, and time to return to work^{a,b}
2. Defined by the Work Ability Index Questionnaire^c
3. Defined by the Output Demand Scale of the Work Limitations questionnaire
4. Defined by the Work Rehabilitation Questionnaire^d
5. Includes a single item of the Support for Workers with a Disability Scale^f
6. Defined by the CollaboRATE Questionnaire^g
7. Includes a single item on satisfaction with communication and collaboration



References:



TEST IN PRACTICE

Four professional groups -cardiologists, general practitioners, occupational physicians, and insurance physicians- utilized the minimal set in their individual practice (n=18).

- Provides a comprehensive understanding of the patient prior to the consultation
- Offers a foundation and valuable content for discussions related to work.

Contact details

Marije Hagendijk
PhD Candidate Amsterdam UMC, Netherlands
m.e.hagendijk@amsterdamumc.nl

