

Measuring health-related and patient-related outcomes for patients with age-related macular degeneration (AMD) in an ophthalmic clinic

Yoanna Vutova¹, Adriana Dacheva¹, Slaveyko Djambazov¹

¹HTA Ltd., Sofia, Bulgaria

Introduction

To assess whether and how outcomes (health-related outcomes, HROs and patient-related outcomes, PROs) are measured in managing AMD: self-reported visual function, symptom state, general health, and satisfaction of treatment. The study's objective is to demonstrate the introduction of VBHC outcome measurement which could help patients and clinicians make better decisions, perform benchmark analysis, and stimulate improvements in healthcare delivery.

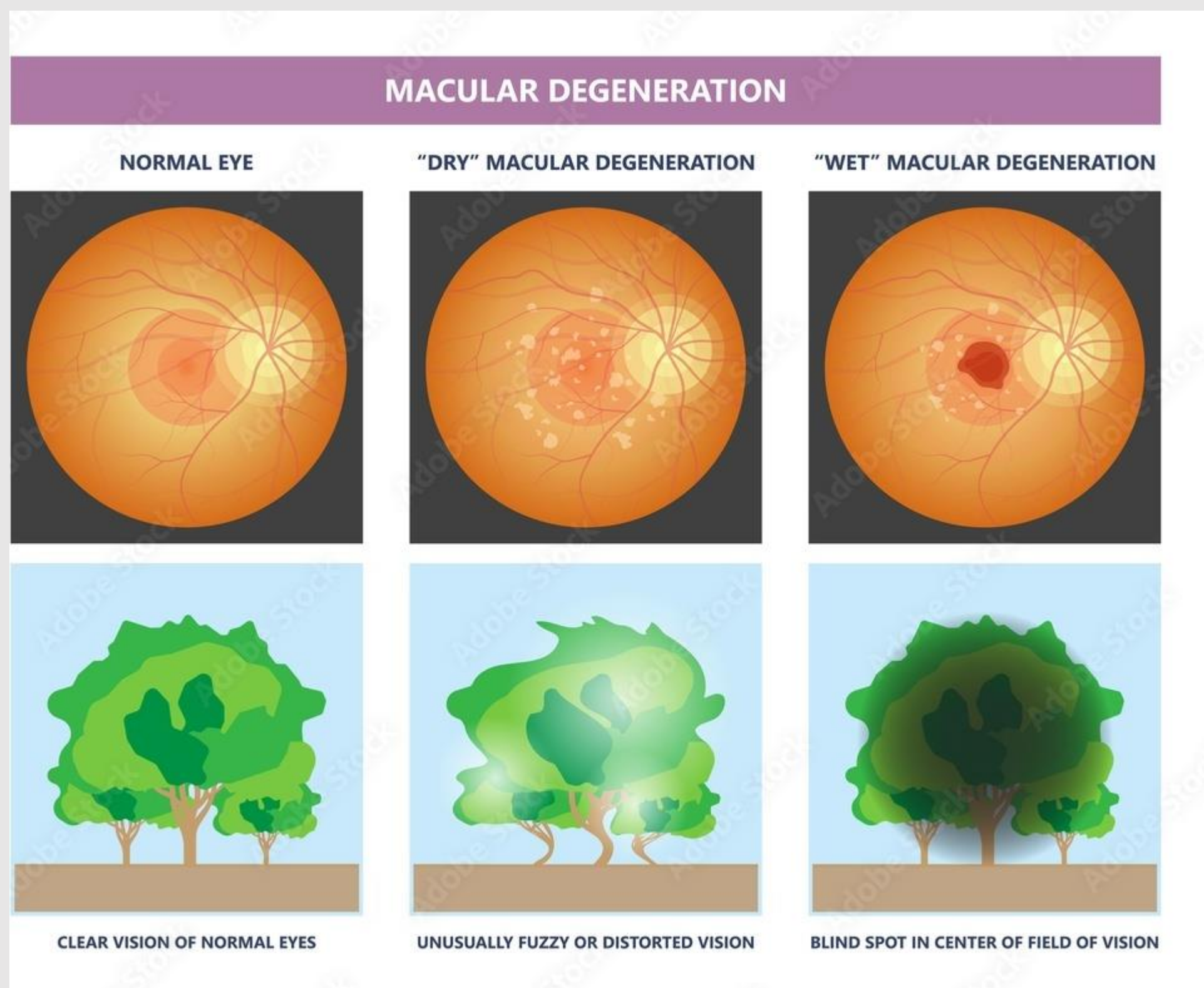


Figure 1: Comparison of MD types

Methods

HRO measurement is assessed using different methods: questionnaires, observation, and software audit. Two main parameters are measured & monitored by clinicians: best-corrected visual acuity letter score gain and the anatomical parameter - reduction of the thickness of the central retina in optical coherence tomography. The PRO standard set for AMD developed by the ICHOM and EQ-5D-5L were selected to measure PRO. The recommendation is collection of data at baseline (first month) and after 4, and 12 months of intravitreal treatment with anti-VEGF-inhibitor.

Results

HRO should be measured, monitored & analyzed digitally at both patient & population level by medical software. The software should be tailored for numerical values, instead of presented in text. This study shows that measuring PRO of patients with AMD via in data digitalization and facilitated analyses. questionnaires and data collection, could be periodically done by specially trained personnel, resulting

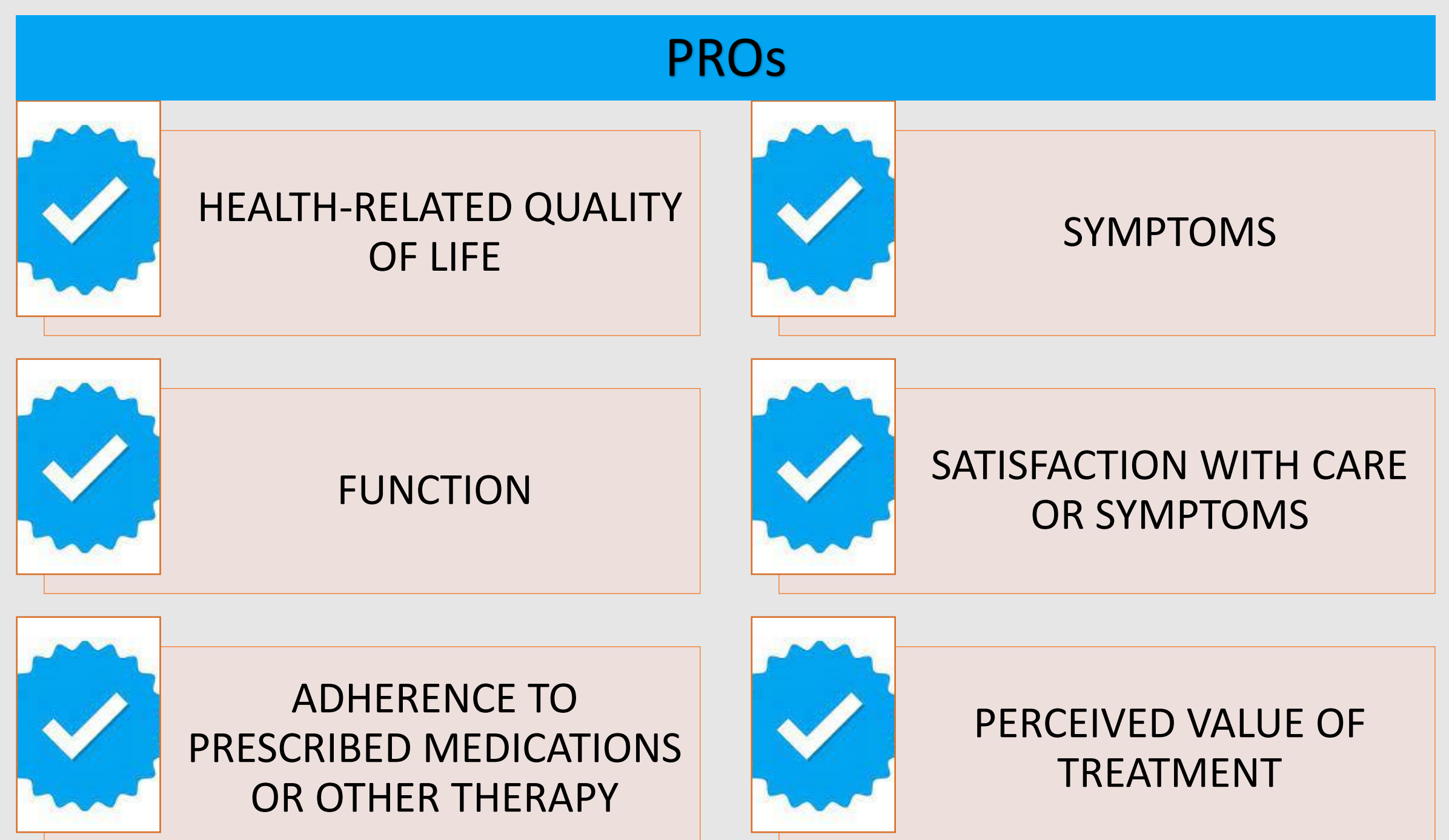


Figure 2: PROs explanation

Conclusions

For AMD in an ophthalmic clinic health outcomes can be measured after a fine-tuning of the software. Collecting PROs is possible by training the personnel to periodically measure outcomes at patient level. This VBH outcome measurement allows data digitalization & evidence based periodic benchmark analysis.