

First Value Based Health Care steps in the Breast cancer care pathway

C. Zoetbrood¹, N. Rosenkamp¹, J. Klinkenbijn¹, M. Langelaan¹, E. den Breejen¹

¹ Gelre Hospitals, Apeldoorn/Zutphen, the Netherlands

Introduction

In 2021, Gelre hospitals started with a Value Based Health Care (VBHC) pilot in the Breast cancer care as part of the new 2020 -2025 strategy of Gelre hospitals.

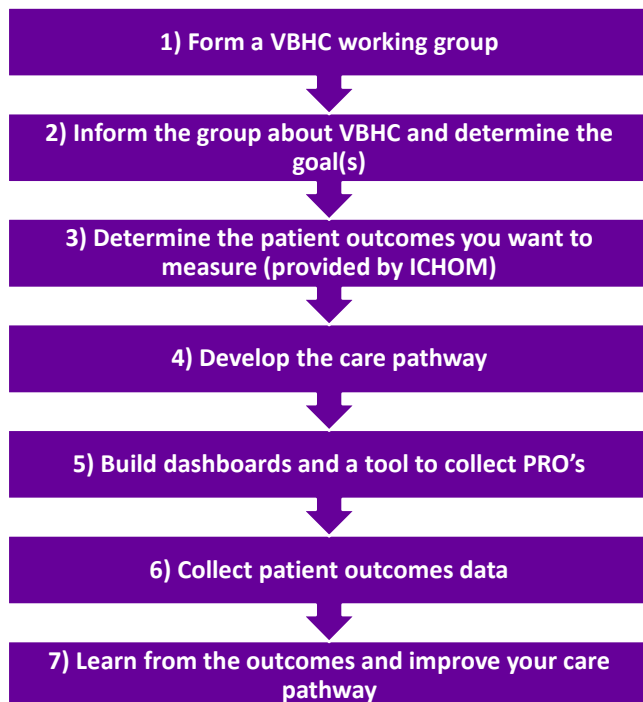
Goal of the Breast cancer pilot was to

1. Gain experiences with the implementation of VBHC and what impact this has on the care pathway
2. Create support among healthcare providers for VBHC

Methods

A generic PROM (EORTC) and an appropriate disease-specific PROM (BREAST-Q) were included in the questionnaires.

We used the following 6 implementation steps to make VBHC and PROMs part of our daily practice:

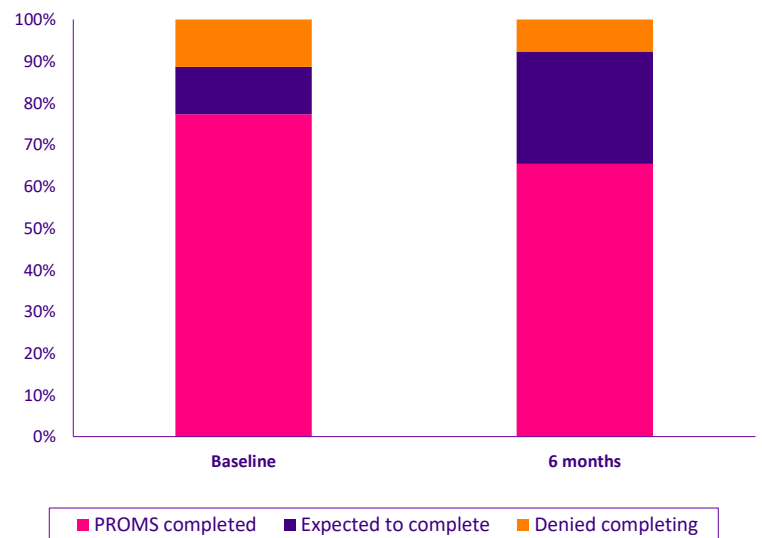


Conclusion

The first results are promising. Most of the patients seem to fill in the PROMs completely. Furthermore, healthcare professionals are positive and eager to learn and improve using the data. Professionals' interests in outcome data are emerging and they are interested in national and international experiences in PROMs and VBHC. Finally, the lessons learned in the breast cancer care are useful for other VBHC implementations.

Results

In the first seven months of the pilot, 123 new patients were included at baseline and 77% completed the questionnaires. 26 patients received the 6 months follow-up questionnaires. Of these, 65% completed these questionnaires.



The evaluation shows some lessons learned regarding the process of implementing VBHC:

- a) Make sure every discipline is involved. Everyone has an impact on the patient care
- b) Use success stories to show the advantages of VBHC for patients and healthcare professionals
- c) Involve the patient during the development of the outcome sets and its implementation.
- d) Use informal (besides formal) evaluation moments during the implementation process, this was rewarded as an important factor for success
- e) Use an implementation coach to support health care professionals in the process
- f) Make sure that the processes are well planned so that everyone knows what to do at what moment.